



Moka



authentic...

- Melamine panel legs 25 mm thick, featuring decorative trim ABS spacers in an aluminium grey finish on the upper sections and metal glides in a matching finish on the lower sections.
- Adjustable stabilizer feet.
- Structural melamine modesty panels with openings to facilitate cable management and aluminium grey metal spacers located at each extremity.
- Desk height 73.50 cm.



Curved desk W. 180 cm on structural return with sliding door. Amber walnut decorative finish. Glass cupboard doors in a white finish. Coach office chair (see p. 156).

and clean design

- Melamine desk tops 25 mm thick, edges protected by a 2 mm thick strip of ABS in a matching finish to the desktop.
- Structure secures to the worktops by means of metal inserts.
- Matching storage units and meeting tables.



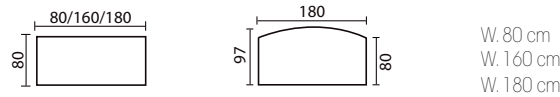
welcoming

Moka's basic desk configurations provide Managers with a welcoming and functional workspace: standard desks, resting on structural returns or with corner link units. Mobile pedestals, traditional storage units and a range of meeting table solutions combine to complete the office space setup.

Rectangular shape desk W. 180 cm with corner link unit and return. Light oak finish. Glass cupboard doors in a mouse grey finish. Trek Executive chair (see p. 165). Barrel shaped meeting table and Fever armchairs (see p. 169).



Rectangular or curved desks

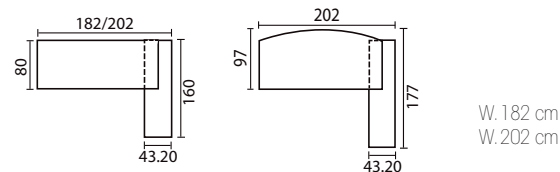


Rectangular desks D. 80 cm
 3 442 400 + top
 3 442 401 + top
 3 442 402 + top

Curved desks D. 97 cm
 3 442 403 + top

Rectangular or curved desks, on supporting return

The return units attach to the left or right-hand side of the desk.



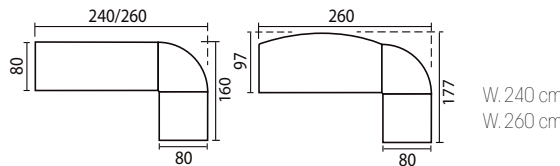
Rectangular desks
 3 442 404 + top
 3 442 405 + top

Curved desks
 3 442 406 + top

Optional sliding door on return unit
 3 442 359 MH

Rectangular or curved panoramic desks on panel legs.

Composed of a main desk unit W. 160 or 180 cm, a 90° link unit and a smaller desk W. 80, D. 80 cm that attach to the left or right-hand side of the main desk.

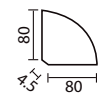


Rectangular desks
 3 442 407 + top
 3 442 408 + top

Curved desks
 3 442 409 + top

90° link unit

Attach to the left or right-hand side of rectangular and curved desks



90° link unit
 W. 80 x D. 80 cm | 3 442 112 + top

Optional tubular support leg for loads in excess of 20kg
 ø 60 mm | 3 442 370 SB

Cable management options

Multi-purpose cable holder.

Allows cables to be fed down from desktops.

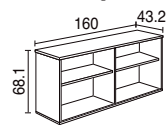


H. 60 x W. 7 cm | 6 478 003 OF

EASY ACCESS STORAGE SOLUTIONS

Supporting return unit

Return fitted with 2 back panels that can be positioned independently on either side of the unit, according to user preference.
 The optional sliding door can also be fitted to either side of the desk return unit according to user preference.



Supporting return unit
 3 442 355 + top

Optional sliding door
 3 442 359 MH

Melamine finishes (+ top)



Metal legs finish



Melamine finish for cupboard shell



Glass doors colour finishes (+ col.)

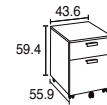


Frosted glass door colour finish



Mobile melamine pedestals

- Melamine shell, front and top panels.
- Filing drawer fitted with an additional 5th castor to prevent tilting.
- Metal handles in an aluminium grey finish.
- Integrated pen tray.
- Cylinder lock mechanism.



2-drawer pedestal
 3 442 113 + top + SB

3-drawer pedestal
 3 442 114 + top + SB

MEETING SPACES

Circular or barrel shaped tables

Supported by 4 circular-section tubular legs, ø 60 mm for the circular table or ø 80 mm for the barrel shaped table. Central stem leg ø 89 mm.



Circular meeting table
 3 442 368 + top + SB
 3 442 125 + top + SB



Barrel meeting table
 3 442 369 + top + SB
 3 442 119 + top + SB

4 tubular legs
 1 central stem
 2 central stems

TRADITIONAL STORAGE SOLUTIONS

Swing door cupboards

- Melamine cupboard shell and shelves, in an aluminium grey finish.
- Melamine doors in matching finish to desks.
- 6 mm thick toughened glass doors, 4 choices of finish.
- 3-point lock on high cupboard doors, single point locking mechanism on medium and low cupboard doors - glass doors are not lockable.
- W. 80 cm x D. 40.7 cm (without doors) or D.42.6 cm.



Melamine doors

Without doors
 2 doors
 1/2 doors - 1/2 bookcase
 1/3 doors - 2/3 bookcase

Cupboards H. 71 cm
 1 shelf

3 442 131 MH
 3 442 140 + top + MH

Cupboards H. 133.3 cm
 3 shelves

3 442 132 MH
 3 442 141 + top + MH
 3 442 147 + top + MH

Cupboards H. 197.3 cm
 4 shelves

3 442 133 MH
 3 442 142 + top + MH
 3 442 148 + top + MH

Glass doors

2 enamelled glass doors
 2 transparent frosted glass doors
 1/3 melamine doors - 2/3 enamelled glass doors
 1/3 melamine doors - 2/3 transparent frosted glass doors

3 442 143 + col.. + MH
 3 442 143 GA MH

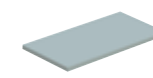
3 442 144 + col.. + MH
 3 442 144 GA MH

3 442 149 + top + MH + col.
 3 442 149 + top + MH GA

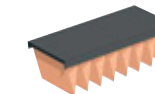
Optional extras for traditional storage solutions



Melamine decorative tops
 In a matching finish to the worktops.
 25 mm thick, depth 43.2 cm.
 W. 80 cm | 3 442 151 + top



Additional melamine shelf
 In a matching finish to cupboard shell.
 19 mm thick.
 W. 80 cm | 3 442 221 MH



Metal shelf
 In a graphite grey finish.
 For suspension files.
 W. 80 cm | 3 442 222 SC



Telescopic filing cradles
 Black metal finish.
 Open to a depth of 100%.
 W. 80 cm | 3 442 360 SG